

# FIXATION

Shapes

Milliken™





## INSPIRED. INSPIRING.

Fixation Shapes offers a creative remix of the much loved Fixation collection. The bold stripes of Fixation are reinterpreted into a medley of simple geometric shapes and interesting angles that combine vivid and sometimes clashing colours with subtle tonal builds.

Use alone, combine with Fixation or mix and match with other Milliken collections to create inspiring interiors that reflect your individuality.



**Fixation Shapes are offered in three patterns: Tilt, Trio and Zigzag.**

Colour your own Fixation Shape using the colours from the Fixation Brights and Fixation Neutrals palette shown on pages 16 to 19.



Simply select your Fixation Shape, choose your colour and contact us to request your customised sample.

Shown opposite: Fixation Zigzag has been combined with Spool Knit and My Pullover from the Rogue Knit collection and various colours from the Formwork collection.





This playful and angled perspective yields a sweeping diagonal statement, transforming and expanding the floor plane as tilting bands of fragmented Fixation stripes are offset through a 45 degree angle.

Fixation Tilt is shown opposite and on the next page in the 'Dove' colour.

Colour your own Fixation Tilt using the Fixation palette shown on pages 16 to 19.











This studied and precise composition combines the tonal shades of Fixation into three offset horizontal bands to deliver a simple gradation of colour across the floor plane.

Fixation Trio shown opposite has been created by combining the 'Truffle', 'Mocha' and 'Antique' colours from the Fixation palette.

Fixation Trio shown on the next spread has been created by combining the 'Cloud', 'Dove' and 'Seahorse' colours from the Fixation palette.

Colour your own Fixation Trio using the Fixation palette shown on pages 16 to 19.









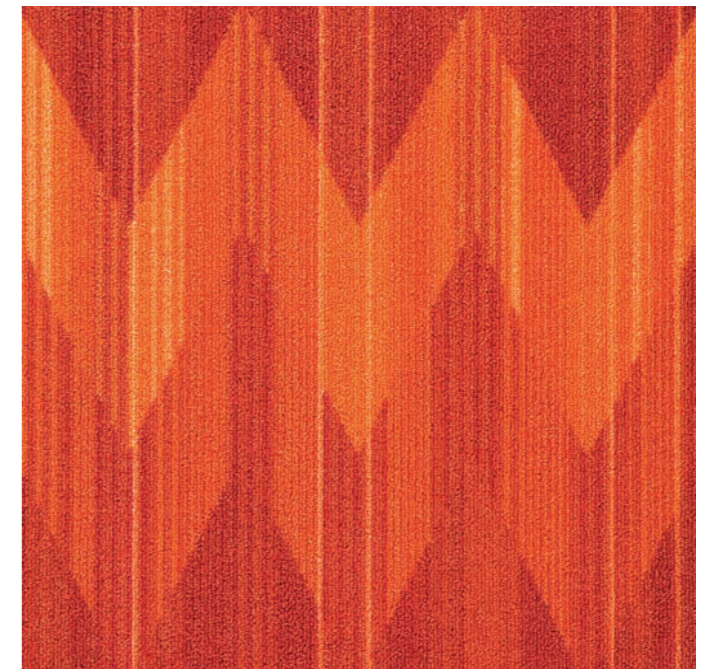


This vibrant and playful interaction of stripes alternating left and right within a fast-paced chevron delivers drama and energy to the floor.

Fixation Zigzag is shown opposite and on the next page in the 'Pumpkin' colour.

Colour your own Fixation Zigzag using the Fixation palette shown on pages 16 to 19.

Shown opposite: Fixation Zigzag has been combined with Darn It!, Knitty Gritty and Bobbin Glow from the Rogue Knit collection.  
Shown on next page: Fixation Zigzag has been combined with Bobbin Glow from the Rogue Knit collection.











FXN81-103 Honeydew



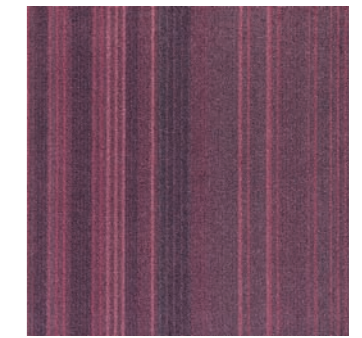
FXN103-141 Calypso



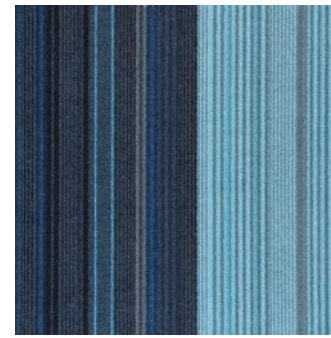
FXN148 Sweetpea



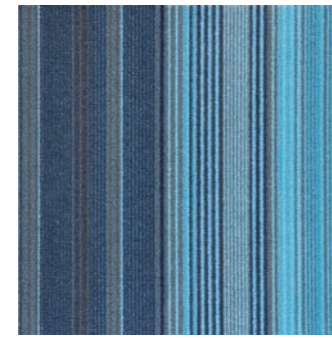
FXN164-104 Sugarplum



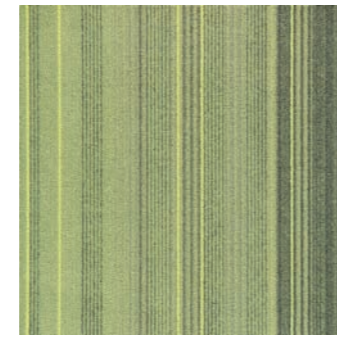
FXN164-137 Damson



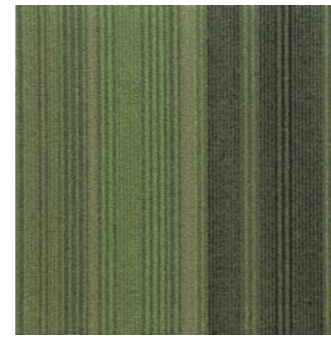
FXN123-125-159 Crystal



FXN05-51-159 Anemone



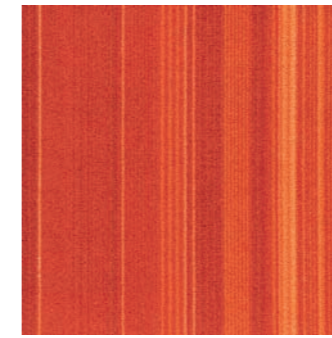
FXN41-103-62 Aventurine



FXN141-100-28 Kale



FXN181 Whistle



FXN128-33 Mandarin



FXN137 Bonbon



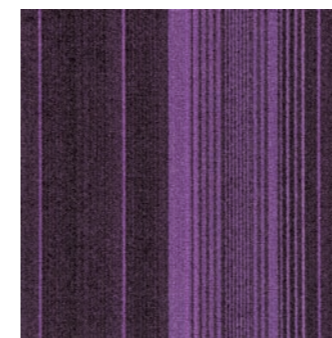
FXN140 Seahorse



FXN157-119-19 Sodalite



FXN48-43-140 Aquamarine



FXN66-178 Duke



FXN147 Sunset



FXN82-137 Pixie



FXN33 Pumpkin



FXN119-19 Nightshade



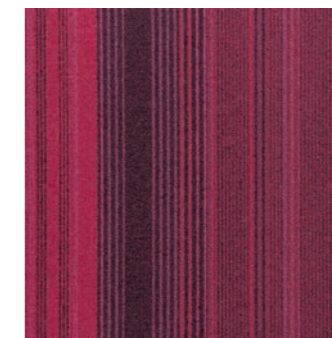
FXN19-157 Gradient



FXN151-66 Lantern



FXN181-38 Skyrise



FXN179-109 Mulberry



FXN166-105 Gemstone

**Full tiles shown**  
For full technical specification  
see page 20

**Complètes dalles représentées**  
Pour les spécifications  
techniques complètes voir  
page 20

**Volle Fliesen abgebildet**  
Für weitere technische  
Informationen siehe Seite 20

**Muestras de loseta entera**  
Para especificaciones técnicas  
completas vea pagina 20





FXN144 Antique



FXN03-11-55 Dune



FXN144-44-06 Truffle



FXN83-11-54 Jasmine



FXN83-87-86 Cereal



FXN103-40-62 Rugged



FXN95-81-69 Caramel



FXN144-79-27 Constellation



FXN44-47 Mocha



FXN05-27 Orion



FXN139 Cloud



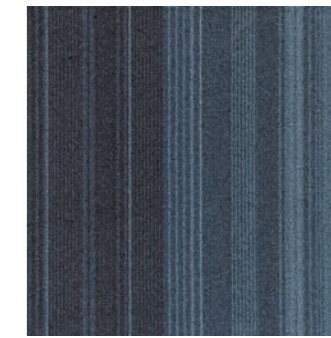
FXN138 Dove



FXN73-182 Cadet



FXN13-06 Fossil



FXN51-25-27 Slate



FXN132-25-118 Puddle



FXN180-173 Pebble



FXN158-51-25 Porpoise



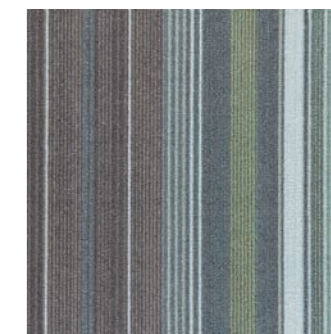
FXN171-25-132 Jade



FXN165-173 Hessian



FXN106-73-52 Rocket



FXN132-139-51 Stardust



FXN108-79-27 Galaxy



FXN108-153-27 Shadow



FXN140 Seahorse

**Full tiles shown**  
For full technical specification  
see page 20

**Complètes dalles représentées**  
Pour les spécifications  
techniques complètes voir  
page 20

**Volle Fliesen abgebildet**  
Für weitere technische  
Informationen siehe Seite 20

**Muestras de loseta entera**  
Para especificaciones técnicas  
completas vea pagina 20



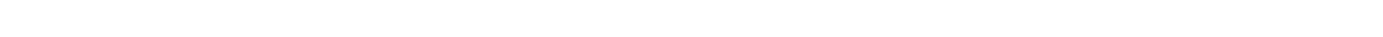
## SPECIFICATIONS

## FIXATION

### Shapes



DOP - 0338 -100402  
EN 14041:2004



SPECIFICATION	SPÉCIFICATION	DATENBLATT	HOJA DE ESPECIFICACIÓN
<p><b>Construction</b> Tufted Level Loop Pile</p> <p><b>Face Fibre</b> Type 6 Nylon</p> <p><b>Soil Release</b> StainSmart®</p> <p><b>Finished Face Weight</b> 420 g/m<sup>2</sup></p> <p><b>Gauge</b> 40/10 cm</p> <p><b>Rows</b> 56/10 cm</p> <p><b>Tuft Density</b> 224,000/m<sup>2</sup></p> <p><b>Finished Pile Height</b> 3,0 mm</p> <p><b>Standard Backing</b> 90% Recycled content Polyurethane cushion Available with TractionBack® on request</p> <p><b>Nominal Total Thickness</b> 8,8 mm</p> <p><b>Tile Size</b> 457,2 x 457,2 mm</p> <p><b>Nominal Total Weight</b> 3700 g/m<sup>2</sup></p> <p><b>Tiles per Box</b> 20 (4,18m<sup>2</sup>)</p>	<p><b>Construction</b> Tuftée bouclée</p> <p><b>Fibre</b> Type 6 Nylon</p> <p><b>Anti- Salissure</b> StainSmart®</p> <p><b>Poids de fibre</b> 420 g/m<sup>2</sup></p> <p><b>Jauge</b> 40/10 cm</p> <p><b>Nombre de points</b> 56/10 cm</p> <p><b>Densité du tuft</b> 224,000/m<sup>2</sup></p> <p><b>Hauteur du Velours</b> 3,0 mm</p> <p><b>Dossier Standard</b> Mousse Polyuréthane à cellule ouverte Dossier 90% recyclé Disponible avec TractionBack® sur demande</p> <p><b>Epaisseur totale</b> 8,8 mm</p> <p><b>Dimensions des dalles</b> 457,2 x 457,2 mm</p> <p><b>Poids total</b> 3700 g/m<sup>2</sup></p> <p><b>Nbre de dalles par Carton</b> 20 (4,18m<sup>2</sup>)</p>	<p><b>Konstruktion</b> Getuftete, flache Schlingenware</p> <p><b>Polfasermaterial</b> Typ 6 Nylon</p> <p><b>Ausrüstung</b> StainSmart®</p> <p><b>Poleinsatzgewicht</b> 420 g/m<sup>2</sup></p> <p><b>Teilung</b> 40/10 cm</p> <p><b>Stiche</b> 56/10 cm</p> <p><b>Noppenzahl</b> 224,000/m<sup>2</sup></p> <p><b>Polschichtdicke</b> 3,0 mm</p> <p><b>Rückenausrüstung</b> Der Schaumrücken enthält 90% recyceltes Polyurethan Auf Wunsch mit TractionBack®</p> <p><b>Gesamtdicke</b> 8,8 mm</p> <p><b>Abmessung</b> 457,2 x 457,2 mm</p> <p><b>Gesamtgewicht</b> 3700 g/m<sup>2</sup></p> <p><b>Fliesen/Karton</b> 20 (4,18m<sup>2</sup>)</p>	<p><b>Modelo</b> Moqueta modular de bucle nivelada</p> <p><b>Fibra</b> Nylon de tipo 6</p> <p><b>Productos para el tratamiento de la suciedad</b> StainSmart®</p> <p><b>Peso final de la cara superior de la moqueta</b> 420 g/m<sup>2</sup></p> <p><b>Galga</b> 40/10 cm</p> <p><b>Hilera</b> 56/10 cm</p> <p><b>Densidad del bucle</b> 224,000/m<sup>2</sup></p> <p><b>Altura final de la cara superior de la moqueta</b> 3,0 mm</p> <p><b>Revestimiento</b> Der 90% del contenido del revestimiento almohadillado de poliuretano es material reciclado. Disponible con revestimiento TractionBack® a solicitud del cliente</p> <p><b>Grosor total aproximado de cada módulo</b> 8,8 mm</p> <p><b>Tamaño de cada módulo</b> 457,2 x 457,2 mm</p> <p><b>Peso total aproximado de cada módulo</b> 3700 g/m<sup>2</sup></p> <p><b>Módulos por caja</b> 20 (4,18m<sup>2</sup>)</p>

### PERFORMANCE

**Flammability (Euroclassification EN13501:1-2002)**  
Class Bfl – s1

**Flammability (Radiant Panel ASTM-E-648)**  
Class 1

**Flammability (Hot metal nut BS4790)**  
Low radius of Char

**Use Classification (EN1307)**  
Class 33 Heavy Commercial Use

**Static Electricity (ISO 6356)**  
≤ 2.0 KV, Permanent Conductive Fibre

**Impact Sound (ISO 140-8)**  
30 dB

**Sound absorption (ISO 354)**  
0,3 Class D

**Alpha s values**  
125Hz 0,02, 250Hz 0,04, 500Hz 0,51, 1000Hz 0,23, 2000Hz 0,30, 4000Hz 0,38

### ENVIRONMENTAL

90% Recycled content cushion backing  
11% Recycled content by total product weight  
Manufactured using electricity from renewable sources  
GUT & CRI Green Label Plus certified for indoor air quality  
BRE ENP 491 Certification: A/A+  
EPD verified

### GUARANTEES

12 year wear guarantee  
Lifetime Antistatic guarantee  
Latent Defects guarantee

Design Copyright – Milliken & Company.  
This cushion-back carpet tile product is covered by one or more patents, published applications and/or patents pending. Specifications are subject to normal manufacturing tolerances and may be changed without prior notice. Copies of actual test results are available upon request.



Colours shown in this catalogue are a photographic representation only. For accurate colour and pattern reference we always suggest obtaining a physical carpet sample.

Les couleurs qui apparaissent sur le catalogue ne sont que des représentations photographiques. Pour une référence précise concernant la couleur ou le motif, nous conseillons toujours d'obtenir un échantillon physique d'une dalle.



### DATENBLATT

**Konstruktion**  
Getuftete, flache Schlingenware

**Polfasermaterial**  
Typ 6 Nylon

**Ausrüstung**  
StainSmart®

**Poleinsatzgewicht**  
420 g/m<sup>2</sup>

**Teilung**  
40/10 cm

**Stiche**  
56/10 cm

**Noppenzahl**  
224,000/m<sup>2</sup>

**Polschichtdicke**  
3,0 mm

**Rückenausrüstung**  
Der Schaumrücken enthält 90% recyceltes Polyurethan Auf Wunsch mit TractionBack®

**Gesamtdicke**  
8,8 mm

**Abmessung**  
457,2 x 457,2 mm

**Gesamtgewicht**  
3700 g/m<sup>2</sup>

**Fliesen/Karton**  
20 (4,18m<sup>2</sup>)

### BAUPHYSIKALISCHE EIGENSCHAFTEN

**Brennverhalten (und Qualmkasse EN13501:1-2002)**  
Klasse Bfl – s1

**Brennverhalten (Radiant Panel ASTM-E-648)**  
Klasse 1

**Brennverhalten (Hot metal nut BS4790)**  
Geringer Verkohlungsradius

**Klassifikation (EN1307)**  
Klasse 33 Extrem

**Statische Ladung (ISO 6356)**  
≤ 2.0 KV, Permanent leitfähige Faser

**Trittschallverbesserungsmaß (ISO 140-8)**  
30 dB

**Schallabsorptionsgrad (ISO 354)**  
0,3 Klasse D

**Alpha-s Werte**  
125Hz 0,02, 250Hz 0,04, 500Hz 0,51, 1000Hz 0,23, 2000Hz 0,30, 4000Hz 0,38

### UMWELTEIGENSCHAFTEN

Enthält 90% recycelten Polsterrücken  
Gesamtgewicht enthält 11% recyceltes Material  
Hergestellt unter Nutzung alternativer Energie  
Zertifizierung CRI Green Label Plus für Raumluftqualität. Zertifizierung GUT  
BRE Zertifizierung ENP 491 : A/A+  
EPD überprüft

### GARANTIE

12 Jahre auf Verschleiß  
Lebenslange Antistatik  
Latenter Mangel

Design Copyright – Milliken & Company.  
Diese Schaumrückenteppichfliesen werden durch ein oder mehrere Patente durch veröffentlichte Anwendung oder durch angemeldete Patente geschützt. Spezifikationen unterliegen normalen Fertigungstoleranzen und können ohne vorherige Ankündigung geändert werden. Kopien der tatsächlichen Testergebnisse sind auf Anfrage erhältlich.



Die im Katalog gezeigten Farben sind nur eine fotografische Wiedergabe. Für akkurate Referenzen der Farben und Design empfehlen wir immer ein physisches Teppichmuster.



Les colores que se muestran en este catálogo son sólo una representación fotográfica.

### HOJA DE ESPECIFICACIÓN

**Modelo**  
Moqueta modular de bucle nivelada

**Fibra**  
Nylon de tipo 6

**Productos para el tratamiento de la suciedad**  
StainSmart®

**Peso final de la cara superior de la moqueta**  
420 g/m<sup>2</sup>

**Galga**  
40/10 cm

**Hilera**  
56/10 cm

**Densidad del bucle**  
224,000/m<sup>2</sup>

**Altura final de la cara superior de la moqueta**  
3,0 mm

**Revestimiento**  
Der 90% del contenido del revestimiento almohadillado de poliuretano es material reciclado. Disponible con revestimiento TractionBack® a solicitud del cliente

**Grosor total aproximado de cada módulo**  
8,8 mm

**Tamaño de cada módulo**  
457,2 x 457,2 mm

**Peso total aproximado de cada módulo**  
3700 g/m<sup>2</sup>

**Módulos por caja**  
20 (4,18m<sup>2</sup>)

### FUNCIONAMIENTO

**Inflamabilidad (Euroclasificación EN13501:1-2002)**  
Clase Bfl – s1

**Inflamabilidad (Panel radiante ASTM-E-648)**  
Clase 1

**Inflamabilidad (Hot metal nut BS4790)**  
Pequeño radio de quema

**Clasificación de uso (EN1307)**  
Clase 33 Uso comercial intenso

**Electricidad estática (ISO 6356)**  
≤ 2.0 KV, Fibra conductora permanente

**Impacto del sonido (ISO 140-8)**  
30 dB

**Absorción del sonido (ISO 354)**  
0,3 Clase D

**Valores Alfa S**  
125Hz 0,02, 250Hz 0,04, 500Hz 0,51, 1000Hz 0,23, 2000Hz 0,30, 4000Hz 0,38

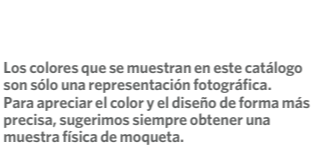
### INFORMACIÓN MEDIOAMBIENTAL

El 90% del contenido del revestimiento almohadillado es reciclado  
El 11% del peso total del producto está compuesto por material reciclado  
Producto fabricado utilizando electricidad procedente de fuentes de energía renovable  
Certificaciones GuT y CRI Green Label Plus sobre la calidad del aire en espacios cerrados  
Certificación BRE ENP 491 : A/A+  
Clasificado por EDP

### GARANTÍAS

12 años de garantía frente al desgaste  
Garantía de por vida de antiestaticidad  
Garantía por posibles defectos

Copyright del diseño – Milliken & Company.  
Esta moqueta con revestimiento almohadillado está protegida por una o más patentes, ya aplicadas o, en su caso, pendientes de concesión. Las especificaciones están sujetas al proceso habitual de fabricación, y pueden variar sin previo aviso. Están a disposición del cliente las copias de los resultados de las pruebas realizadas a nuestras moquetas.



Los colores que se muestran en este catálogo son sólo una representación fotográfica.

Para apreciar el color y el diseño de forma más precisa, sugerimos siempre obtener una muestra física de moqueta.

## SUSTAINABILITY

### ENVIRONMENTAL

### RECYCLAGE

### WELLBEING

### SAFETY

### PERFORMANCE

### QUALITY

### DESIGN

### COMFORT

### CONSTRUCTION

### INSTALLATION

### MAINTENANCE

### WARRANTY

### COLOURS

### PHOTOGRAPHY

### TESTING

### CERTIFICATION

### EPD

### GREEN LABEL PLUS

### GREEN LABEL

### GREEN LABEL

### GREEN LABEL

### GREEN LABEL

### GREEN LABEL

### GREEN LABEL

### GREEN LABEL

### GREEN LABEL

### GREEN LABEL

### GREEN LABEL

### GREEN LABEL

### GREEN LABEL

### GREEN LABEL

### GREEN LABEL

### GREEN LABEL

### GREEN LABEL

### GREEN LABEL

### GREEN LABEL

### GREEN LABEL

### GREEN LABEL

### GREEN LABEL

### GREEN LABEL

### GREEN LABEL

### GREEN LABEL

### GREEN LABEL

### GREEN LABEL

### GREEN LABEL

### GREEN LABEL

### GREEN LABEL

### GREEN LABEL

### GREEN LABEL

### GREEN LABEL

### GREEN LABEL

### GREEN LABEL

### GREEN LABEL

### GREEN LABEL

### GREEN LABEL

### GREEN LABEL

### GREEN LABEL

### BACKING

### CONSTRUCTION

### INSTALLATION

### MAINTENANCE

### WARRANTY

### COLOURS

### PHOTOGRAPHY

### TESTING

### CERTIFICATION

### EPD

### GREEN LABEL PLUS

### GREEN LABEL

### GREEN LABEL

### GREEN LABEL

### GREEN LABEL

### GREEN LABEL

### GREEN LABEL

### GREEN LABEL

### GREEN LABEL

### GREEN LABEL

### GREEN LABEL

### GREEN LABEL

### GREEN LABEL

### GREEN LABEL

### GREEN LABEL

### GREEN LABEL

### GREEN LABEL

### GREEN LABEL

### GREEN LABEL

### GREEN LABEL

### GREEN LABEL

### GREEN LABEL

### GREEN LABEL

### GREEN LABEL

### GREEN LABEL

### GREEN LABEL

### GREEN LABEL

### GREEN LABEL

### GREEN LABEL

### GREEN LABEL

### GREEN LABEL

### GREEN LABEL

### GREEN LABEL

### GREEN LABEL

### GREEN LABEL

### GREEN LABEL

### GREEN LABEL

### GREEN LABEL

### GREEN LABEL

### GREEN LABEL

### GREEN LABEL

### GREEN LABEL

### GREEN LABEL

### GREEN LABEL

### GREEN LABEL

### GREEN LABEL

### CERTIFICATION

### CONSTRUCTION

### INSTALLATION

### MAINTENANCE

### WARRANTY

### COLOURS

### PHOTOGRAPHY

### TESTING

### CERTIFICATION

### EPD

### GREEN LABEL PLUS

### GREEN LABEL

### GREEN LABEL

### GREEN LABEL

### GREEN LABEL

### GREEN LABEL

### GREEN LABEL

### GREEN LABEL

### GREEN LABEL

### GREEN LABEL

### GREEN LABEL

### GREEN LABEL

### GREEN LABEL

### GREEN LABEL

### GREEN LABEL

### GREEN LABEL

### GREEN LABEL

### GREEN LABEL

### GREEN LABEL

### GREEN LABEL

### GREEN LABEL

### GREEN LABEL

### GREEN LABEL

### GREEN LABEL

### GREEN LABEL

### GREEN LABEL

### GREEN LABEL

### GREEN LABEL

### GREEN LABEL

### GREEN LABEL

### GREEN LABEL

### GREEN LABEL

### GREEN LABEL

### GREEN LABEL

### GREEN LABEL

### GREEN LABEL

### GREEN LABEL

### GREEN LABEL









**SAMPLE HOTLINE +44(0)1942 612 803**

**CUSTOMER SERVICE**

T +44 (0)1942 612 777 | [carpetenquiries@milliken.com](mailto:carpetenquiries@milliken.com)  
Beech Hill Plant, Gidlow Lane, Wigan WN6 8RN, England

**LONDON STUDIO**

T +44 (0)20 7336 7290  
5 Berry Street, Clerkenwell, London EC1V 0AA, England

[www.millikencarpet.com](http://www.millikencarpet.com)

**Version 1** / Issued December 2014  
**Version 1** / Publiée Décembre 2014  
**Version 1** / Ausgabe Dezember 2014  
**Versión 1** / Expedida Diciembre 2014